

Splunk Edge Hub

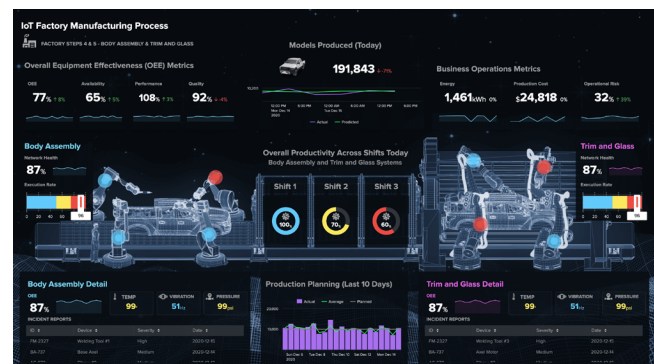
Optimizing access to data generated from IoT and sensors

Splunk Edge Hub is a comprehensive solution that helps customers achieve a more complete view across all data flows and environments. The Splunk Edge Hub device comes with integrated sensors and support for many industrial protocols to collect and monitor data generated in physical environments. And when coupled with the analytic power of the Splunk platform, the solution enables customers to accelerate detection, optimize investigation, and automate response workflows, all at scale. What's more, customers can also visualize their data through Splunk dashboards to gain deeper insights into operations.



Key Use Cases

- **Monitor environmental conditions** in Data Centers and Network Closets to prevent costly unplanned downtime
- **Predictive analytics** in Manufacturing processes hedge against outages and downtimes and predict infrastructure-related maintenance schedules
- **Customized solutions** built by Splunk Edge Hub Partners to enrich visibility and drive business resilience





Edge AI generates insights

Machine learning and deep learning are enabled on individual sensors to detect anomalies and other patterns at the edge - without sending data to the cloud.



Light



Vibration



Temperature



Humidity



Gyroscope



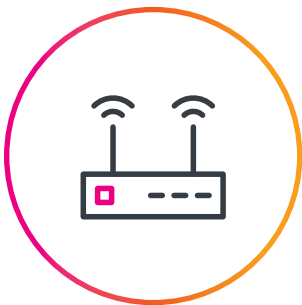
Pressure



Sound



Air Quality



Industrial protocols boost robustness

Natively supports MQTT, SNMP, and OPC UA Client protocols. Also features an IP66 rating for durability.

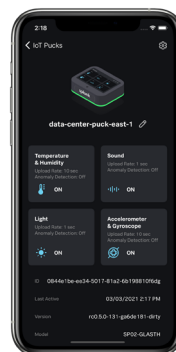


Connectivity keeps you in the know

Options include Power over Ethernet or Wifi2.4/5ghz, LTE Cellular connectivity, and Bluetooth. Accessible through Splunk Connected Experiences including mobile, AR, and TV.

Splunk Edge Hub Solution Components

- Splunk Enterprise v9 and above or Splunk Cloud Platform (Victoria)
- Splunk Secure Gateway
- Splunk Edge Mobile
- Splunk App for Edge and AR



Splunk Edge Hub Device Specifications	
CPU	NXP IMX8M Plus - Quad Arm Cortex-A53 processor 1.8 GHz with a Neural Processing Unit (NPU)
Memory & Storage	8GB RAM & 32 GB eMMC SSD
Display	<ul style="list-style-type: none"> • 4.97" HD OLED (720 x 1280) • Vibrant Color: 16.7M (RGB x 8bits) • Multi-touch capacitive touch overlay
Built-In Sensors	<ul style="list-style-type: none"> • High sensitivity light sensor • Temperature sensor ($\pm 0.2^{\circ}\text{C}$ from 0°C to 90°C, IP66 rated membrane) • Humidity ($\pm 2\%$ from 0°C to 90°C) • Sound sensor (Microphone) • Vibration (3-Axis Accelerometer) • Gyroscope (6-Axis Gyro & Accelerometer) • (Optional) Pressure - (300...1100 hPa) ± 0.12 hPa (equiv. to 1m @ 400m height change) • (Optional) VOC w/ Gas Analysis - < 1s response with IAQ Score Output
Power	<ul style="list-style-type: none"> • USB-C PD (5V,9V,15V with 3A max) • PoE++ standard (802.3bt)
Connectivity	<ul style="list-style-type: none"> • Wifi 5 - Wi-Fi 802.11ac (2.4GHz & 5GHz) • 3.5mm TRS Jack for various pluggable sensors like water leak rope (+/-/Ground) • LTE/4G Cellular & GNSS • 5G Cellular (available on request)
Operating System	Yocto Linux
Dimensions	<ul style="list-style-type: none"> • Height: 39 mm / 1.53 in. • Length: 149 mm / 5.87 in. • Width: 122 mm / 4.8 in.
Weight	330g / 0.73 lbs

For more information, visit edgehubcentral.com.